

2/2- or 3/2-way- Rocker Solenoid Valve



Type 6128 can be combined with...



Type 2507

Cable Plug

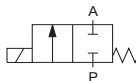
- Direct acting
- Hermetic isolation of fluid
- Vacuum to 10 bar¹⁾
- Orifice 2 or 3 mm
- Manual override as standard
- Sub-base and threaded port version
- 22 mm width per station

Note

This Type will be replaced by 6628 in 2013

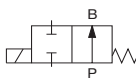
The 6128 analytical solenoid valve combines all state of the art features in a compact design. With high reliability, virtually no heat transfer between fluid and coil, low internal volume and Burkert's expertise in supplying customized solutions, these valves are a perfect fit even for the most demanding applications.

Circuit function A



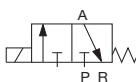
2/2-way valve,
direct acting,
normally closed

Circuit function B



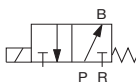
2/2-way valve,
direct acting,
normally open

Circuit function C



3/2-way valve,
direct acting, when
de-energised Port A
exhausted

Circuit function D



3/2-way valve,
direct acting, when
de-energised Port B
pressurised

Technical data

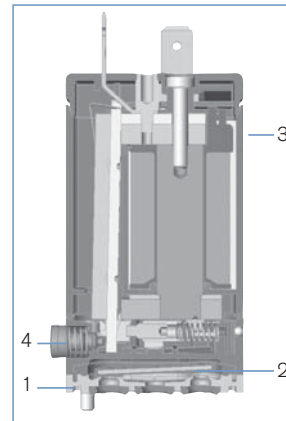
Body material	PEEK and PPS
G, NPT connection subbase connection	PPS
Seal material	EPDM or FKM
Medium	Resistant to neutral and slightly aggressive fluids (see chemical resistance chart); technical vacuum
Medium temperature	0 °C ... +70 °C
Ambient temperature	0 °C ... +60 °C
Viscosity	max. 21 mm ² /s
Port connection	Sub-base G 1/8 NPT 1/8 on request
Operating voltages	24 V DC, 230 V / 50 Hz Other voltages on request
Voltage tolerance	± 10%
Power consumption	5 W
Duty cycle	100 % continuous rating
Electrical connection	<ul style="list-style-type: none"> ▪ Acc. to Form B industrial standard for cable plug Type 2507 ▪ Rectangular plug ▪ 500mm leads on request
Manual override	Standard
Installation	As required, preferably with actuator upright
Protection class	IP40

¹⁾ Pressure values [bar]: Measured as overpressure to the atmospheric pressure

Response times

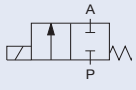
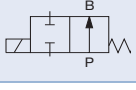
Circuit function	Orifice DN [mm]	Kv value water [m³/h]	QNn-value air [l/min]	Pressure range [bar]	Response times		Max. pressure difference [bar]
					opening [ms]	closing [ms]	
A	2	0,1	104	Vacu-10	18	8	10
	3	0,13	136	Vacu-3	18	8	3
B	2	0,1	104	Vacu-10	18	8	10
	3	0,13	136	Vacu-3	18	8	3
C	2	0,1	104	Vacu-10	18	8	10
	3	0,13	136	Vacu-3	18	8	3
D	2	0,1	104w	Vacu-10	18	8	10
	3	0,13	136	Vacu-3	18	8	3

- Kv value [m³/h]: Flow rate for water, Measured at +20 °C, 1 bar¹⁾ pressure difference
- Response times [ms]: Measured at valve outlet at 3 bar¹⁾ and +20°C according to ISO 12238.
Opening Pressure rise from 0...10%
Closing Pressure drop from 100...90%

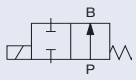
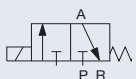


1. Valve body, PEEK / PPS
2. Diaphragm, EPDM or FKM
3. Coil body, PA
4. Manual override, PA

Ordering chart

Circuit function	Orifice DN [mm]	Body material	Seal material	Voltage/ frequency [V/ Hz]	Port connection	Electrical connection	Item no.
A 	2.0	PPS	FKM	24 V/DC	Sub-base	Rectangular plug	160 758
						Tag connector Form B	160 759
		PEEK/ PPS	G 1/8	Rectangular plug	160 760		
				Tag connector Form B	160 761		
		PPS	EPDM	24 V/DC	Sub-base	Rectangular plug	160 763
						Tag connector Form B	160 764
	PEEK/ PPS	G 1/8	Rectangular plug	160 765			
			Tag connector Form B	160 766			
	3.0	PPS	FKM	24 V/DC	Sub-base	Rectangular plug	160 767
						Tag connector Form B	160 768
		PEEK/ PPS	G 1/8	Rectangular plug	160 769		
				Tag connector Form B	160 770		
PPS		EPDM	24 V/DC	Sub-base	Rectangular plug	160 771	
					Tag connector Form B	160 772	
PEEK/ PPS	G 1/8	Rectangular plug	160 773				
		Tag connector Form B	160 774				
B 	2.0	PPS	FKM	24 V/DC	Sub-base	Rectangular plug	160 775
						Tag connector Form B	160 776
		PEEK/ PPS	G 1/8	Rectangular plug	160 777		
				Tag connector Form B	160 778		
		PPS	EPDM	24 V/DC	Sub-base	Rectangular plug	160 779
						Tag connector Form B	160 780
PEEK/ PPS	G 1/8	Rectangular plug	160 781				
		Tag connector Form B	160 782				

Ordering chart (continued)

Circuit function	Orifice DN [mm]	Body material	Seal Material	Voltage/ frequency [V/Hz]	Port Connection	Electrical connection	Item no.
B 	2.0	PPS	EPDM	24 V/DC	Sub-base	Rectangular plug	160 782
						Tag connector Form B	160 783
		PEEK/ PPS		G 1/8	Rectangular plug	160 784	
					Tag connector Form B	160 785	
		230 V/50 Hz		G 1/8	Tag connector Form B	160 786	
					Tag connector Form B	160 787	
	3.0	PPS	FKM	24 V/DC	Sub-base	Rectangular plug	160 788
						Tag connector Form B	160 789
		PEEK/ PPS		G 1/8	Rectangular plug	160 790	
					Tag connector Form B	160 791	
		230 V/50 Hz		G 1/8	Tag connector Form B	160 792	
					Tag connector Form B	160 793	
3.0	PPS	EPDM	24 V/DC	Sub-base	Rectangular plug	160 794	
					Tag connector Form B	160 795	
	PEEK/ PPS		G 1/8	Rectangular plug	160 796		
				Tag connector Form B	160 797		
	230 V/50 Hz		G 1/8	Tag connector Form B	160 798		
				Tag connector Form B	160 799		
C 	2.0	PPS	FKM	24 V/DC	Sub-base	Rectangular plug	160 800
						Tag connector Form B	160 801
		PEEK/ PPS		G 1/8	Rectangular plug	160 802	
					Tag connector Form B	160 803	
		230 V/50 Hz		G 1/8	Tag connector Form B	160 804	
					Tag connector Form B	160 805	
	3.0	PPS	FKM	24 V/DC	Sub-base	Rectangular plug	160 806
						Tag connector Form B	160 807
		PEEK/ PPS		G 1/8	Rectangular plug	160 808	
					Tag connector Form B	160 809	
		230 V/50 Hz		G 1/8	Tag connector Form B	160 810	
					Tag connector Form B	160 811	
3.0	PPS	EPDM	24 V/DC	Sub-base	Rectangular plug	160 812	
					Tag connector Form B	160 813	
	PEEK/ PPS		G 1/8	Rectangular plug	160 814		
				Tag connector Form B	160 815		
	230 V/50 Hz		G 1/8	Tag connector Form B	160 816		
				Tag connector Form B	160 817		
3.0	PPS	FKM	24 V/DC	Sub-base	Rectangular plug	160 818	
					Tag connector Form B	160 819	
	PEEK/ PPS		G 1/8	Rectangular plug	160 820		
				Tag connector Form B	160 821		
	230 V/50 Hz		G 1/8	Tag connector Form B	160 822		
				Tag connector Form B	160 823		
3.0	PPS	EPDM	24 V/DC	Sub-base	Rectangular plug	160 824	
					Tag connector Form B	160 825	
	PEEK/ PPS		G 1/8	Rectangular plug	160 826		
				Tag connector Form B	160 827		
	230 V/50 Hz		G 1/8	Tag connector Form B	160 828		
				Tag connector Form B	160 829		

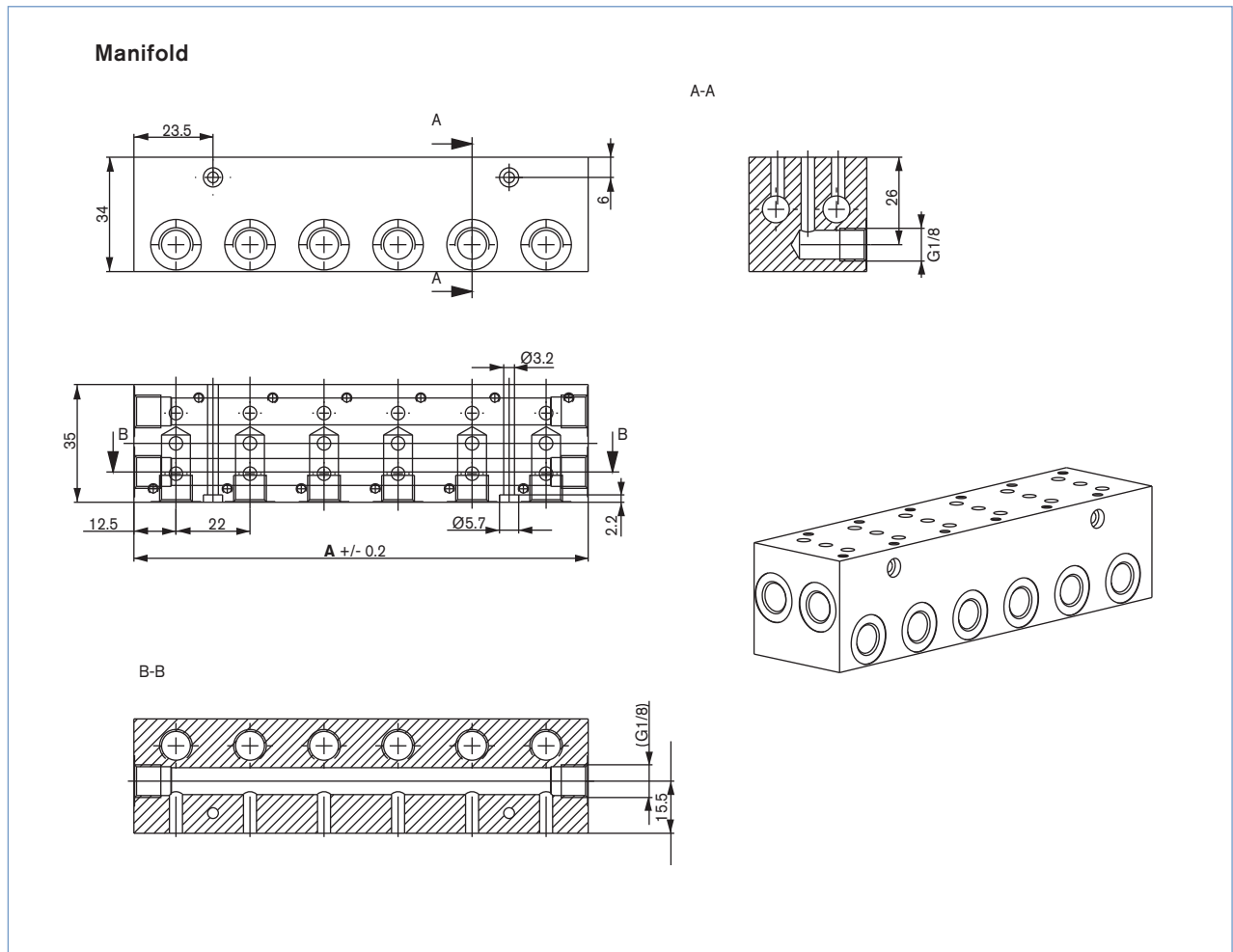
- Rectangular plug supplied **without** cable plug (see ordering chart for accessories).
- Manual override as standard.
- Other versions on request.

Ordering chart for manifold

Multiple Manifolds with individual service port (G1/8) and diverter function on 2 common channels (G1/8);
Delivery without valves; Material: anodized aluminium


Manifold	A [mm]	Item no.
2-fold	47	669 571
3-fold	69	672 633
4-fold	91	669 572
5-fold	113	672 661
6-fold	135	669 570
10-fold	223	672 660

▪ Other versions on request.






Ordering chart for accessories

Cable Plug Type 2507 according to Industrial standard Form B

	Accessories	Version	Voltage	Item no.
	Cable Plug Type 2507	without Circuitry	0 ... 250 V AC/DC	423 845
		with LED	24 V AC/DC	423 849

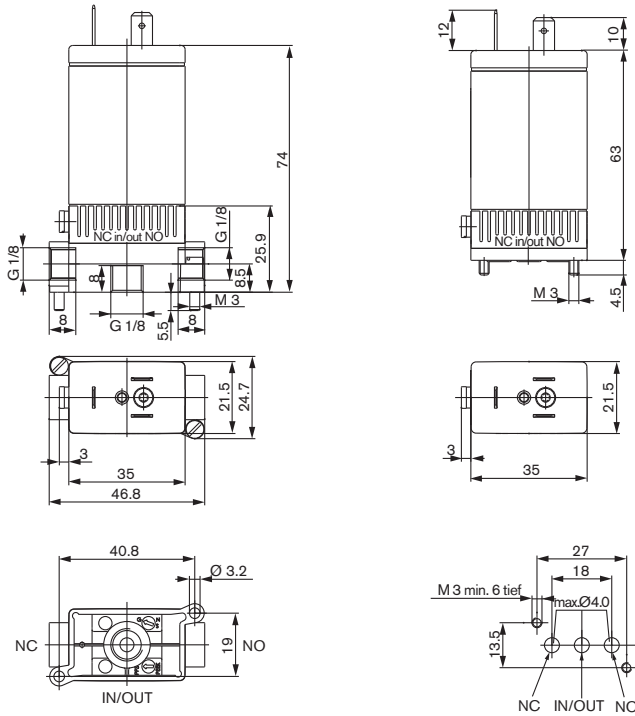
Rectangular plug Type 2505

	Accessories	Item no.
	with 3m cable	133 486
	with 300mm leads	644 068
	Single contact for individual mounting	644 067

Dimensions [mm]

Valves with tag connector Form B - Industrial standard

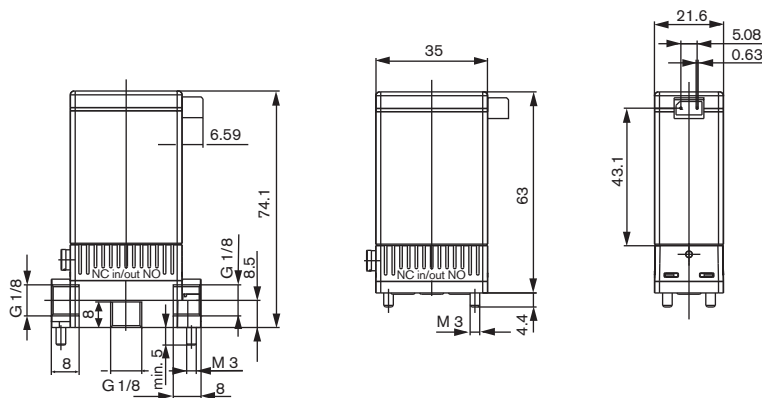
(The middle connection is not applicable in the case of the 2/2-way version)



Threaded port body G1/8 manifold mounting (2xM3 screws)

Flange interface for manifold mounting (2xM3 screws)

Valves with rectangular plug



DTS 1000011050 EN Version: O Status: RL (released | freigegeben | valide) printed: 20.01.2015

To find your nearest Bürkert facility, click on the orange box →

www.burkert.com

In case of special application conditions, please consult for advice.

Subject to alteration.
© Christian Bürkert GmbH & Co. KG

1304/9_EU-en_00891862